

兔抗 NPC2 多克隆抗体

中文名称：兔抗 NPC2 多克隆抗体

英文名称：Anti-NPC2 rabbit polyclonal antibody

别名：HE1; EDDM1

相关类别：一抗

储存：冷冻（-20℃）避光

抗原：NPC2

宿主：Rabbit

反应种属：Human, Mouse, Rat

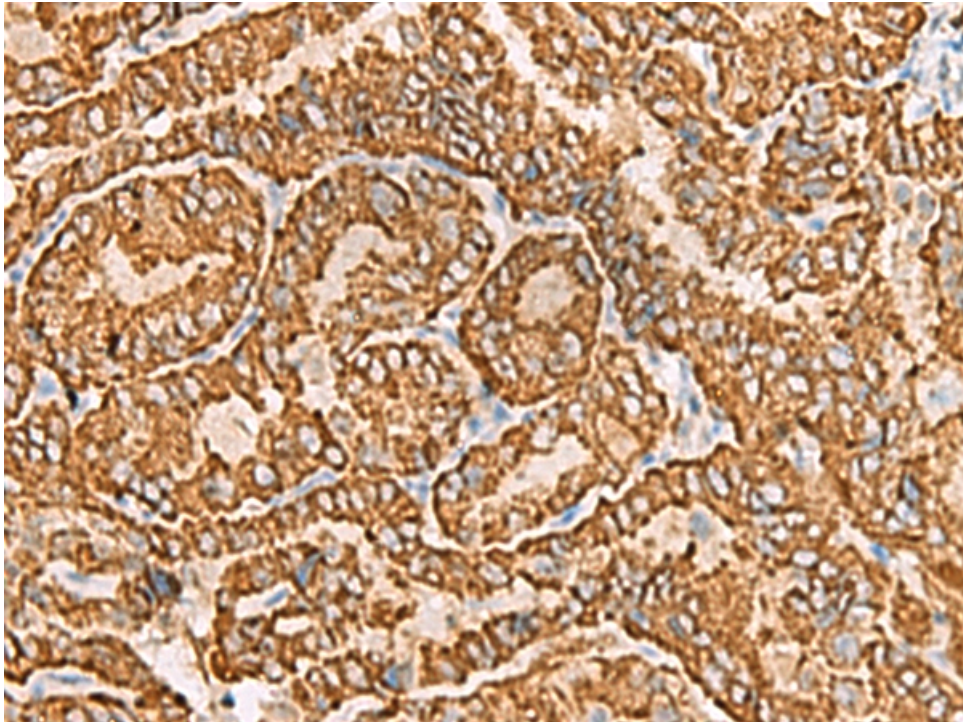
标记物：Unconjugate

克隆类型：rabbit polyclonal

技术规格

Background:	This gene encodes a protein containing a lipid recognition domain. The encoded protein may function in regulating the transport of cholesterol through the late endosomal/lysosomal system. Mutations in this gene have been associated with Niemann-Pick disease, type C2 and frontal lobe atrophy.
Applications:	WB, IHC
Name of antibody:	NPC2
Immunogen:	Fusion protein of human NPC2
Full name:	Niemann-Pick disease, type C2
Synonyms :	HE1; EDDM1
SwissProt:	P61916

IHC positive control:	Human liver cancer and Human prostate cancer
IHC Recommend dilution:	25-100
WB Predicted band size:	17 kDa
WB Positive control:	NIH/3T3 cell
WB Recommended dilution:	500-2000



mlbio 酶联生物
Good elisakit producers

