

## 兔抗 TAB1 多克隆抗体

中文名称：兔抗 TAB1 多克隆抗体

英文名称：Anti-TAB1 rabbit polyclonal antibody

别名：3<sup>l</sup>-Tab1; MAP3K7IP1

相关类别：一抗

储存：冷冻（-20℃）

抗原：TAB1

宿主：Rabbit

反应种属：Human, Mouse

标记物：Unconjugate

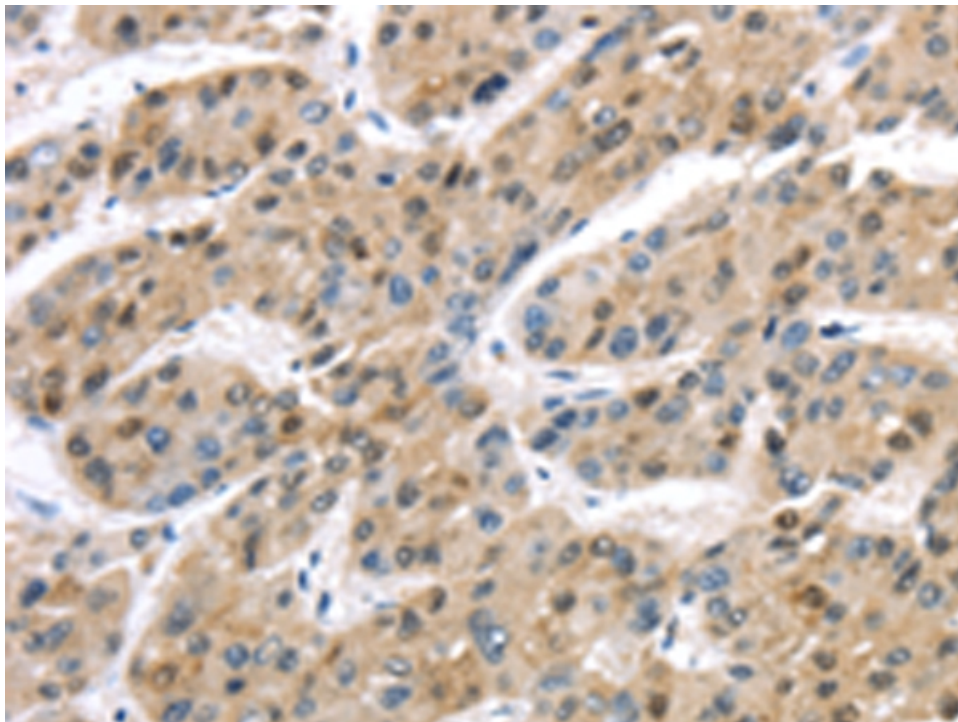
克隆类型：rabbit polyclonal

### 技术规格

**Background:**

The protein encoded by this gene was identified as a regulator of the MAP kinase kinase kinase MAP3K7/TAK1, which is known to mediate various intracellular signaling pathways, such as those induced by TGF beta, interleukin 1, and WNT-1. This protein interacts and thus activates TAK1 kinase. It has been shown that the C-terminal portion of this protein is sufficient for binding and activation of TAK1, while a portion of the N-terminus acts as a dominant-negative inhibitor of TGF beta, suggesting that this protein may function as a mediator between TGF beta receptors and TAK1. This protein

	can also interact with and activate the mitogen-activated protein kinase 14 (MAPK14/p38alpha), and thus represents an alternative activation pathway, in addition to the MAPKK pathways, which contributes to the biological responses of MAPK14 to various stimuli. Alternatively spliced transcript variants encoding distinct isoforms have been reported.
<b>Applications:</b>	ELISA, IHC
<b>Name of antibody:</b>	TAB1
<b>Immunogen:</b>	Synthetic peptide of humanTAB1
<b>Full name:</b>	TGF-beta activated kinase 1/MAP3K7 binding protein 1
<b>Synonyms :</b>	3'-Tab1; MAP3K7IP1
<b>SwissProt:</b>	Q15750
<b>ELISA Recommended dilution:</b>	2000-5000
<b>IHC positive control:</b>	Human liver cancer
<b>IHC Recommend dilution:</b>	25-100



**mlbio** 梅联生物  
Good elisakit producers