

小鼠抗 HSPD1 单克隆抗体

中文名称： 小鼠抗 HSPD1 单克隆抗体

英文名称： Anti-HSPD1 mouse monoclonal antibody

别名： heat shock protein family D (Hsp60) member 1; HLD4; CPN60; GROEL; HSP60; HSP65; SPG13; HSP-60; HuCHA60

相关类别： 一抗

储存： 冷冻 (-20℃)

宿主： Mouse

抗原： HSPD1

反应种属： Human, Mouse, Rat

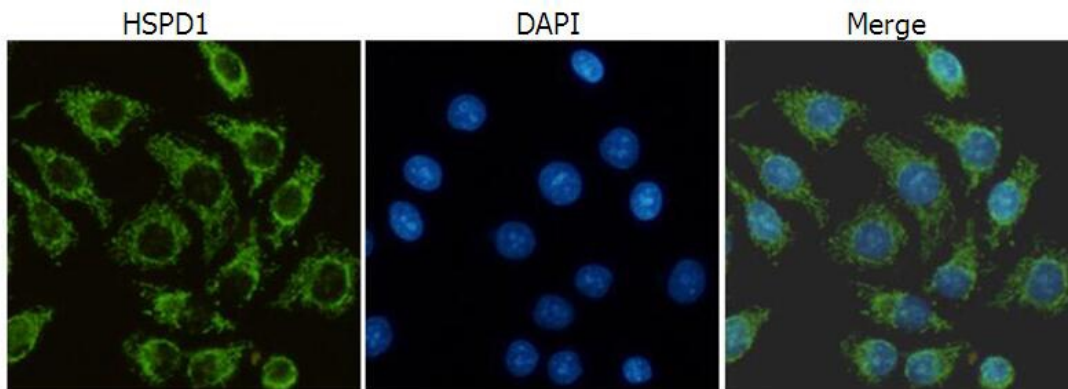
标记物： Unconjugate

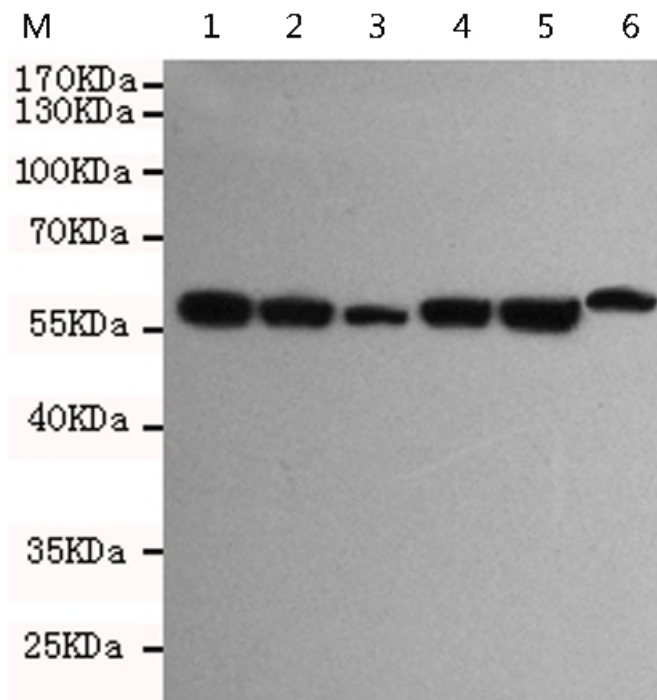
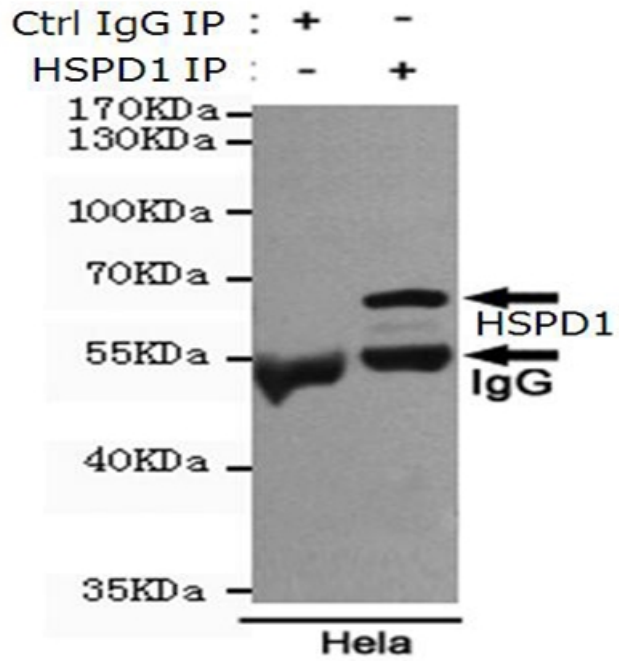
克隆类型： Mouse Monoclonal

技术规格

Background:	This gene encodes a member of the chaperonin family. The encoded mitochondrial protein may function as a signaling molecule in the innate immune system. This protein is essential for the folding and assembly of newly imported proteins in the mitochondria. This gene is adjacent to a related family member and the region between the 2 genes functions as a bidirectional promoter. Several pseudogenes have been associated with this gene. Two transcript variants encoding the same protein have been identified for this gene. Mutations associated with this gene cause a autosomal recessive spastic paraplegia 13.
--------------------	--

Applications:	WB, IF, IP
Name of antibody:	HSPD1
Immunogen:	Fusion protein of human HSPD1
Full name:	heat shock protein family D (Hsp60) member 1
Synonyms:	HLD4; CPN60; GROEL; HSP60; HSP65; SPG13; HSP-60; HuC HA60
SwissProt:	P10809
WB Predicted band size:	61 kDa
WB Positive control:	3T3, C2C12, C6, Jurkat, Raji and HeLa cell lysates
WB Recommended dilution:	1000-5000
IF positive control:	HeLa cells
IF Recommend dilution:	50-100





mlbio 梅联生物
Good elisakit producers