

## 兔抗 PBXIP1 多克隆抗体

中文名称：兔抗 PBXIP1 多克隆抗体

英文名称：Anti-PBXIP1 rabbit polyclonal antibody

别名：PBX homeobox interacting protein 1; HPIP

相关类别：一抗

储存：冷冻（-20℃）

宿主：Rabbit

抗原：PBXIP1

反应种属：Human

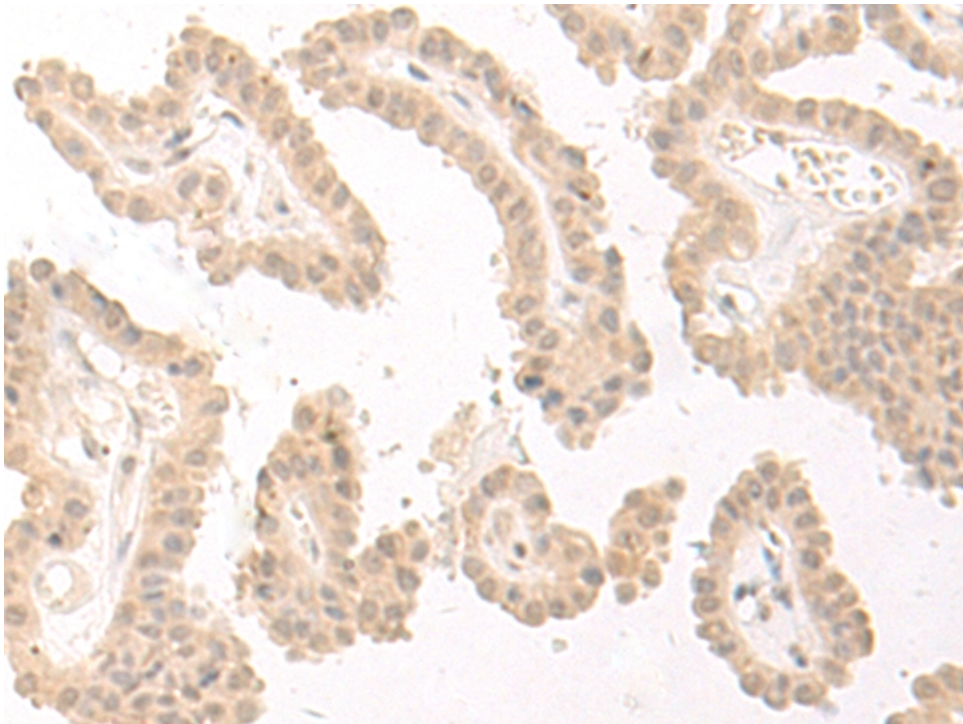
标记物：Unconjugate

克隆类型：rabbit polyclonal

### 技术规格

<b>Background:</b>	The protein encoded by this gene interacts with the PBX1 homeodomain protein, inhibiting its transcriptional activation potential by preventing its binding to DNA. The encoded protein, which is primarily cytosolic but can shuttle to the nucleus, also can interact with estrogen receptors alpha and beta and promote the proliferation of breast cancer, brain tumors, and lung cancer. Several transcript variants encoding different isoforms have been found for this gene. More variants exist, but their full-length natures have yet to be determined.
<b>Applications:</b>	ELISA, WB, IHC
<b>Name of antibody:</b>	PBXIP1

<b>Immunogen:</b>	Fusion protein of human PBXIP1
<b>Full name:</b>	PBX homeobox interacting protein 1
<b>Synonyms:</b>	HPIP
<b>SwissProt:</b>	Q96AQ6
<b>ELISA Recommended dilution:</b>	5000-10000
<b>IHC positive control:</b>	Human esophagus cancer and Human thyroid cancer
<b>IHC Recommend dilution:</b>	30-150
<b>WB Predicted band size:</b>	81 kDa
<b>WB Positive control:</b>	PC3, A549 and Hela cell lysates
<b>WB Recommended dilution:</b>	200-1000



**mlbio** 梅联生物  
Good elisakit producers