

兔抗 PRMT6 多克隆抗体

中文名称：兔抗 PRMT6 多克隆抗体

英文名称：Anti-PRMT6 rabbit polyclonal antibody

别名：protein arginine methyltransferase 6; HRMT1L6

相关类别：一抗

储存：冷冻（-20℃）

宿主：Rabbit

抗原：PRMT6

反应种属：Human, Mouse

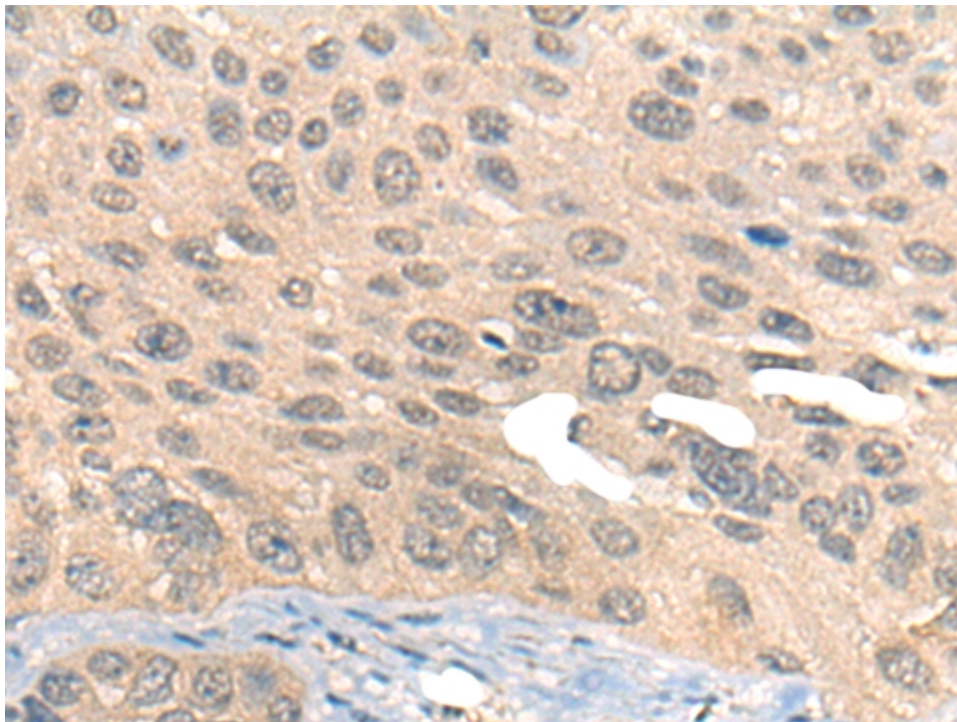
标记物：Unconjugate

克隆类型：rabbit polyclonal

技术规格

Background:	The protein encoded by this gene belongs to the arginine N-methyltransferase family, which catalyze the sequential transfer of methyl group from S-adenosyl-L-methionine to the side chain nitrogens of arginine residues within proteins, to form methylated arginine derivatives and S-adenosyl-L-homocysteine. This protein can catalyze both, the formation of omega-N monomethylarginine and asymmetrical dimethylarginine, with a strong preference for the latter. It specifically mediates the asymmetric dimethylation of Arg2 of histone H3, and the methylated form represents a specific tag for epigenetic transcriptional repr
--------------------	--

	<p>ession. This protein also forms a complex with, and methylates DNA polymerase beta, resulting in stimulation of polymerase activity by enhancing DNA binding and processivity.</p>
Applications:	ELISA, WB, IHC
Name of antibody:	PRMT6
Immunogen:	Synthetic peptide of human PRMT6
Full name:	protein arginine methyltransferase 6
Synonyms:	HRMT1L6
SwissProt:	Q96LA8
ELISA Recommended dilution:	5000-10000
IHC positive control:	Human ovarian cancer
IHC Recommend dilution:	20-100
WB Predicted band size:	42 kDa
WB Positive control:	NIH/3T3 and 293T cell lysates
WB Recommended dilution:	200-1000



mlbio 酶联生物
Good elisakit producers