

兔抗 **ARRB1** 多克隆抗体

中文名称：兔抗 ARRB1 多克隆抗体

英文名称：Anti-ARRB1 rabbit polyclonal antibody

别名：ARB1; ARR1

抗原：ARRB1

储存：冷冻（-20℃）

宿主：Rabbit

相关类别：一抗

反应种属：Human, Mouse, Rat

标记物：Unconjugate

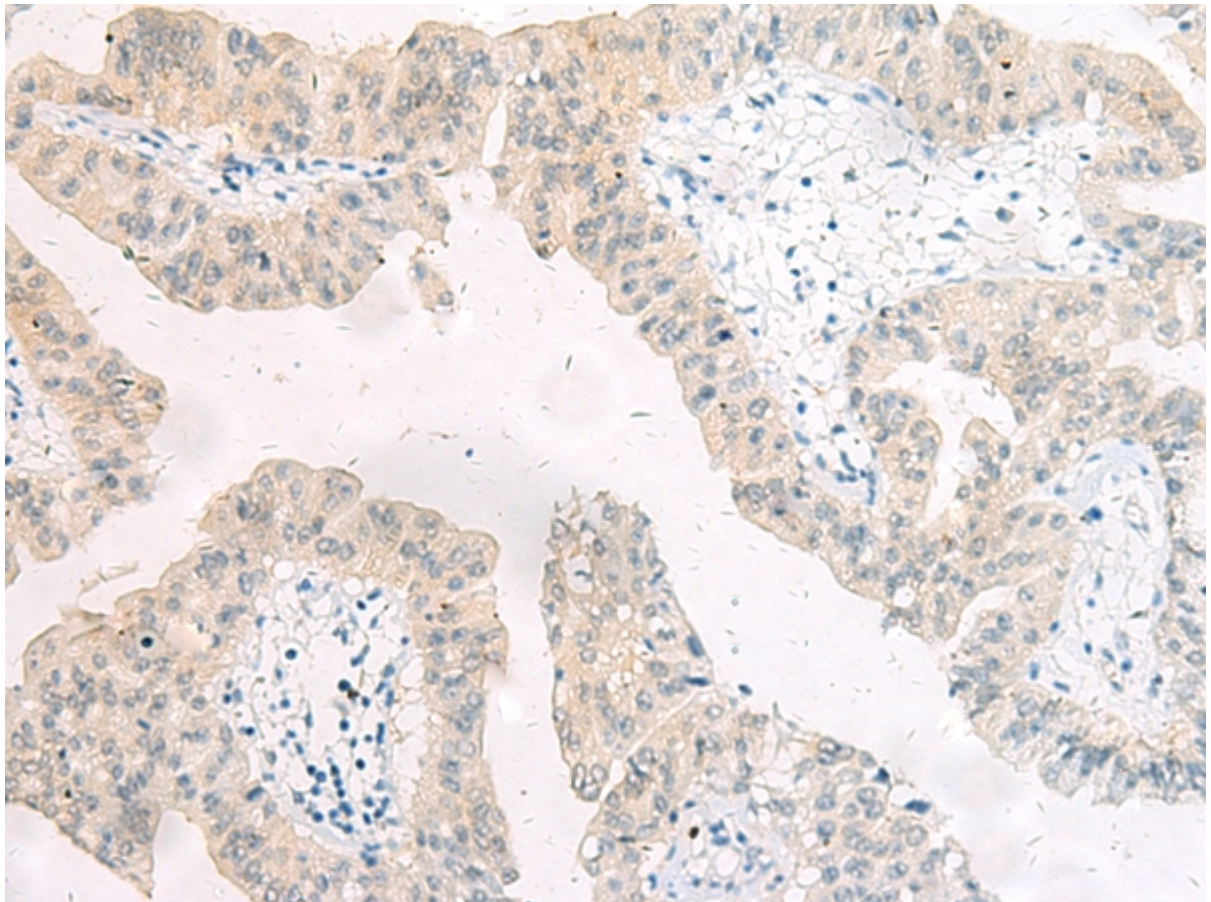
克隆类型：rabbit polyclonal

技术规格

Background:

Members of arrestin/beta-arrestin protein family are thought to participate in agonist-mediated desensitization of G-protein-coupled receptors and cause specific dampening of cellular responses to stimuli such as hormones, neurotransmitters, or sensory signals. Arrestin beta 1 is a cytosolic protein and acts as a cofactor in the beta-adrenergic receptor kinase (BARK) mediated desensitization of beta-adrenergic receptors. Besides the central nervous system, it is expressed at high levels in peripheral blood leukocytes, and thus the BARK/beta-arrestin system is believed to play a major role in regulating receptor-m

	ediated immune functions. Alternatively spliced transcripts encoding different isoforms of arrestin beta 1 have been described.
Applications:	ELISA, IHC
Name of antibody:	ARRB1
Immunogen:	Fusion protein of human ARRB1
Full name:	arrestin, beta 1
Synonyms :	ARB1; ARR1
SwissProt:	P49407
ELISA Recommended dilution:	1000-5000
IHC positive control:	Human liver cancer and human cervical cancer
IHC Recommend dilution:	50-200



mlbio 梅联生物
Good elisakit producers