

兔抗 **BASP1** 多克隆抗体

中文名称：兔抗 BASP1 多克隆抗体

英文名称：Anti-BASP1 rabbit polyclonal antibody

别名：brain abundant membrane attached signal protein 1; CAP23; NAP22; CAP-23; NAP-22

相关类别：一抗

储存：冷冻（-20℃）

抗原：BASP1

宿主：Rabbit

反应种属：Human

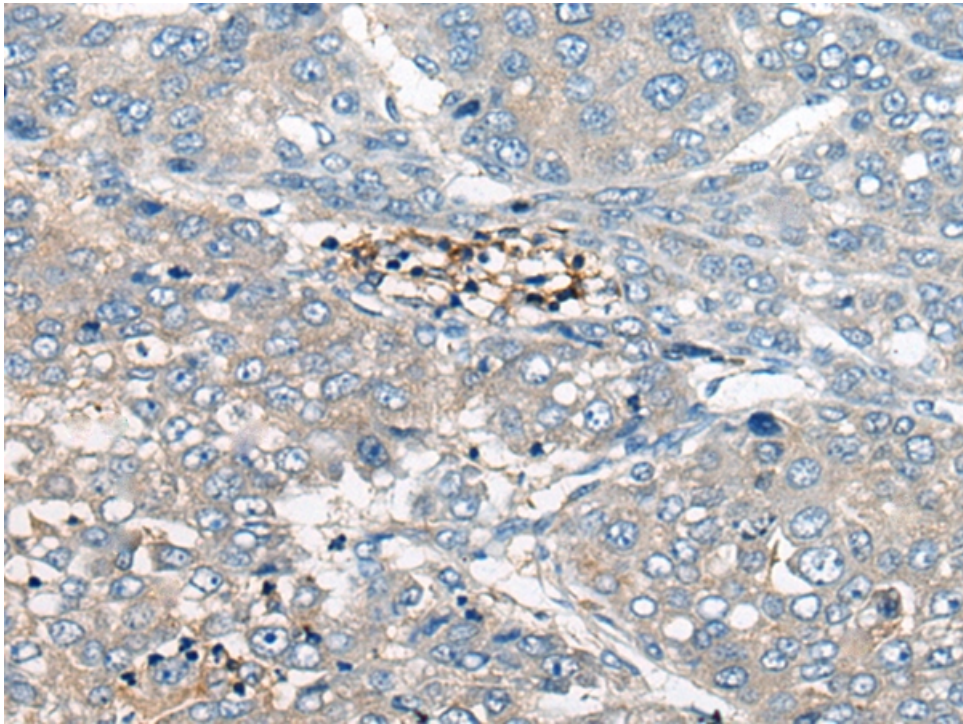
标记物：Unconjugate

克隆类型：rabbit polyclonal

技术规格

Background:	This gene encodes a membrane bound protein with several transient phosphorylation sites and PEST motifs. Conservation of proteins with PEST sequences among different species supports their functional significance. PEST sequences typically occur in proteins with high turnover rates. Immunological characteristics of this protein are species specific. This protein also undergoes N-terminal myristoylation. Alternative splicing results in multiple transcript variants that encode the same protein.
Applications:	ELISA, IHC
Name of antibody:	BASP1

Immunogen:	Synthetic peptide of human BASP1
Full name:	brain abundant membrane attached signal protein 1
Synonyms:	CAP23; NAP22; CAP-23; NAP-22
SwissProt:	P80723
ELISA Recommended dilution:	5000-10000
IHC positive control:	Human brain and human liver cancer
IHC Recommend dilution:	25-100



mlbio 梅联生物
Good elisakit producers

