

兔抗 CACNA1H 多克隆抗体

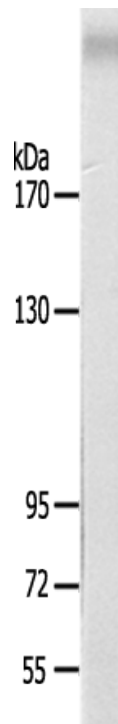
- 中文名称：兔抗 CACNA1H 多克隆抗体
- 英文名称：Anti-CACNA1H rabbit polyclonal antibody
- 别名：ECA6; EIG6; Cav3.2; CACNA1HB
- 相关类别：一抗
- 储存：冷冻（-20℃）避光
- 宿主：Rabbit
- 抗原：CACNA1H
- 反应种属：Human Mouse Rat
- 标记物：Unconjugate
- 克隆类型：Unconjugate

技术规格

Background:

This gene encodes a T-type member of the alpha-1 subunit family, a protein in the voltage-dependent calcium channel complex. Calcium channels mediate the influx of calcium ions into the cell upon membrane polarization and consist of a complex of alpha-1, alpha-2/delta, beta, and gamma subunits in a 1:1:1:1 ratio. The alpha-1 subunit has 24 transmembrane segments and forms the pore through which ions pass into the cell. There are multiple isoforms of each of the proteins in the complex, either encoded by different genes or the result of alternative splicing of transcripts. Alternate transcriptional splice variants, encoding different isoforms, have been characterized f

	or the gene described here. Studies suggest certain mutations in this gene lead to childhood absence epilepsy (CAE).
Applications:	WB
Name of antibody:	CACNA1H
Immunogen:	Synthesized peptide derived from internal of human CACNA1H.
Full name:	calcium channel, voltage-dependent, T type, alpha 1H subunit
Synonyms :	ECA6; EIG6; Cav3.2; CACNA1HB
SwissProt:	O95180
WB Predicted band size:	259 kDa
WB Positive control:	A549 cells lysate
WB Recommended dilution:	500-3000



mlbio 梅联生物
Good elisakit producers