

兔抗 CCND1 多克隆抗体

中文名称：兔抗 CCND1 多克隆抗体

英文名称：Anti-CCND1 rabbit polyclonal antibody

别名：BCL1, PRAD1, U21B31, D11S287E

储存：冷冻（-20℃）

抗原：CCND1

宿主：Rabbit

相关类别：一抗

反应种属：Human, Mouse, Rat

标记物：Unconjugate

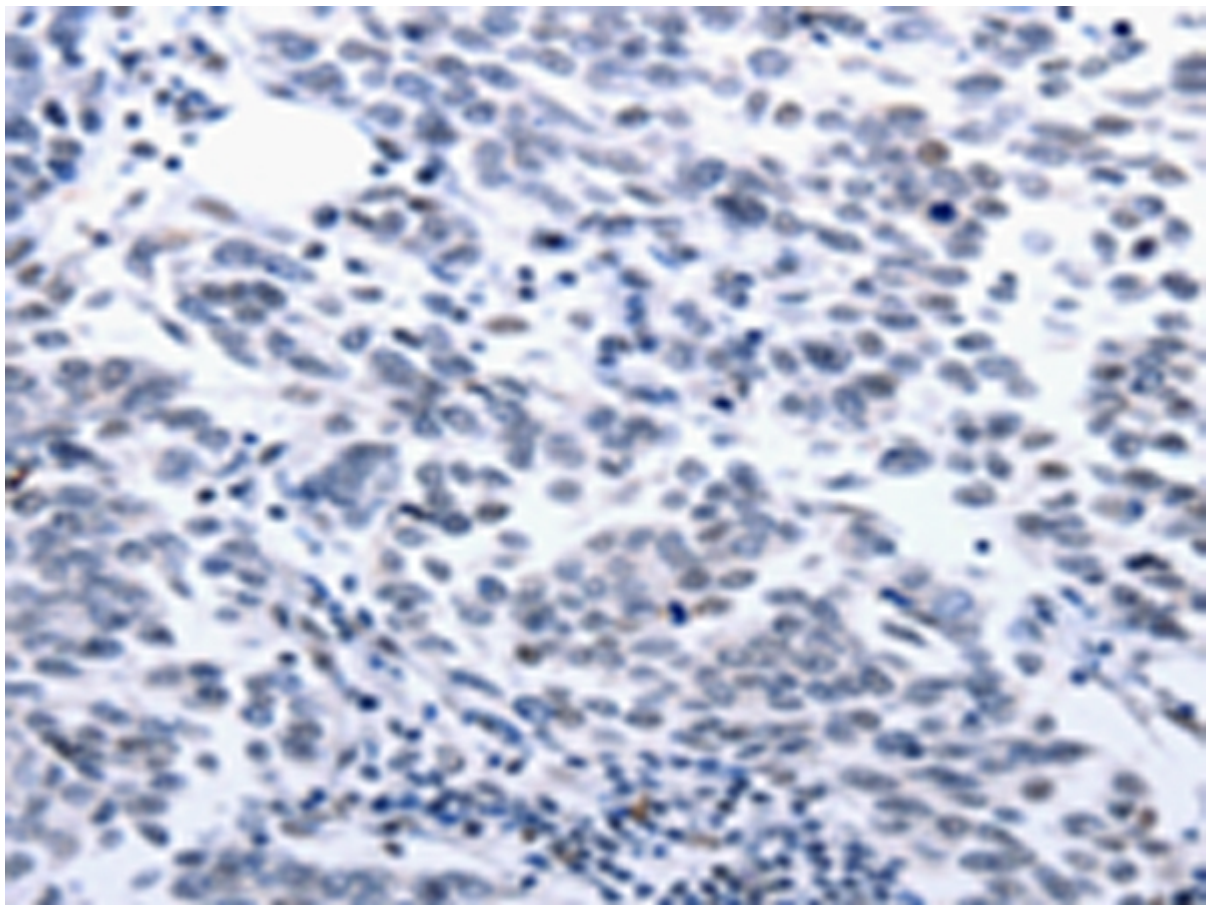
克隆类型：rabbit polyclonal

技术规格

Background:

The protein encoded by this gene belongs to the highly conserved cyclin family, whose members are characterized by a dramatic periodicity in protein abundance throughout the cell cycle. Cyclins function as regulators of CDK kinases. Different cyclins exhibit distinct expression and degradation patterns which contribute to the temporal coordination of each mitotic event. This cyclin forms a complex with and functions as a regulatory subunit of CDK4 or CDK6, whose activity is required for cell cycle G1/S transition. This protein has been shown to interact with tumor suppressor protein Rb and the expression of this gene is regulated positively

	by Rb. Mutations, amplification and overexpression of this gene, which alters cell cycle progression, are observed frequently in a variety of tumors and may contribute to tumorigenesis.
Applications:	ELISA, IHC
Name of antibody:	CCND1
Immunogen:	Synthetic peptide of human CCND1
Full name:	Cyclin D1
Synonyms :	BCL1, PRAD1, U21B31, D11S287E
SwissProt:	P24385
ELISA Recommended dilution:	500-5000
IHC positive control:	Human breast cancer and Human thyroid cancer
IHC Recommend dilution:	10-50



mlbio 梅联生物
Good elisakit producers