

兔抗 CDC20B 多克隆抗体

中文名称：兔抗 CDC20B 多克隆抗体

英文名称：Anti-CDC20B rabbit polyclonal antibody

别名：cell division cycle 20B; G6VTS76519

相关类别：一抗

抗原：CDC20B

储存：冷冻（-20℃）

宿主：Rabbit

反应种属：Human

标记物：Unconjugate

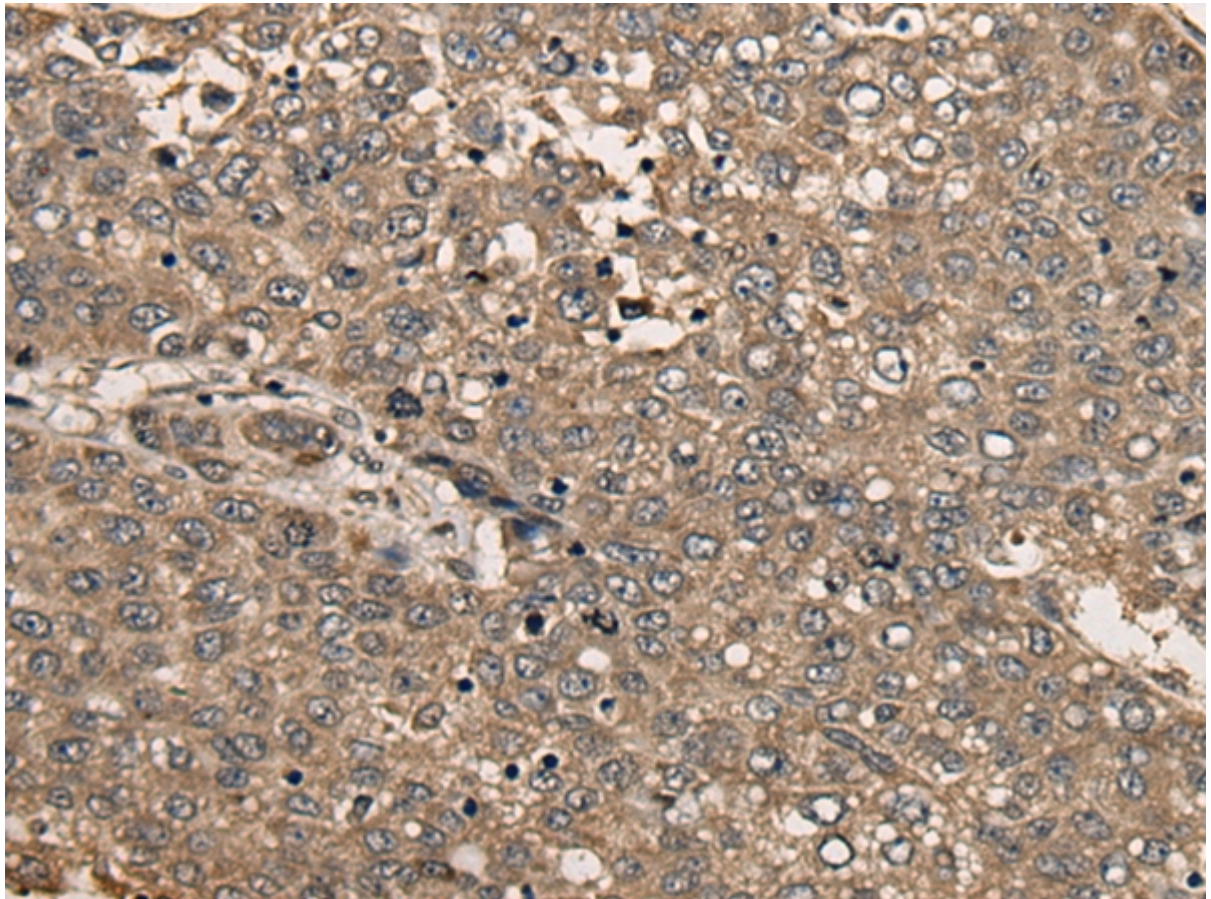
克隆类型：rabbit polyclonal

技术规格

Background:

WD-repeats are motifs that are found in a variety of proteins and are characterized by a conserved core of 40-60 amino acids that commonly form a tertiary propeller structure. While proteins that contain WD-repeats participate in a wide range of cellular functions, they are generally involved in regulatory mechanisms concerning chromatin assembly, cell cycle control, signal transduction, RNA processing, apoptosis and vesicular trafficking. Cdc 20B (cell division cycle 20 homolog B) is a 519 amino acid protein that contains seven WD repeats and is thought to play a role in cell cycle control. Multiple isoforms of Cdc20B exist due to alternative splicing events. The

	gene encoding Cdc20B maps to human chromosome 5, which contains 181 million base pairs and comprises nearly 6% of the human genome. Deletion of the p arm of chromosome 5 leads to Cri du chat syndrome, while deletion of the q arm or of chromosome 5 altogether is common in therapy-related acute myelogenous leukemias and myelodysplastic syndrome.
Applications:	ELISA, IHC
Name of antibody:	CDC20B
Immunogen:	Synthetic peptide of human CDC20B
Full name:	cell division cycle 20B
Synonyms:	G6VTS76519
SwissProt:	Q86Y33
ELISA Recommended dilution:	5000-10000
IHC positive control:	Human liver cancer
IHC Recommend dilution:	30-150



mlbio 梅联生物
Good elisakit producers