

## 兔抗 CHP1 多克隆抗体

中文名称: 兔抗 CHP1 多克隆抗体

英文名称: Anti-CHP1 rabbit polyclonal antibody

别名: calcineurin like EF-hand protein 1; CHP; p22; p24; Sid470p; SLC9A1BP

储存: 冷冻 (-20℃)

抗原: CHP1

宿主: Rabbit

反应种属: Human, Mouse, Rat

标记物: Unconjugate

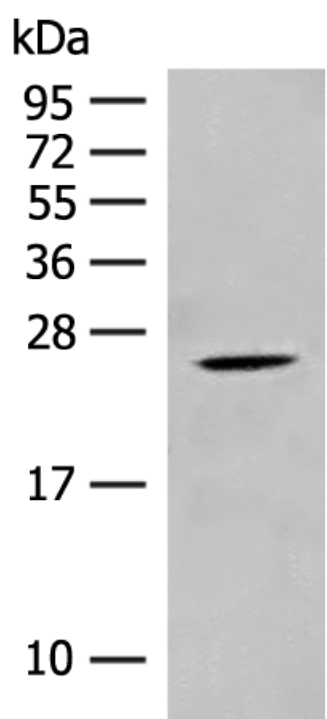
相关类别: 一抗

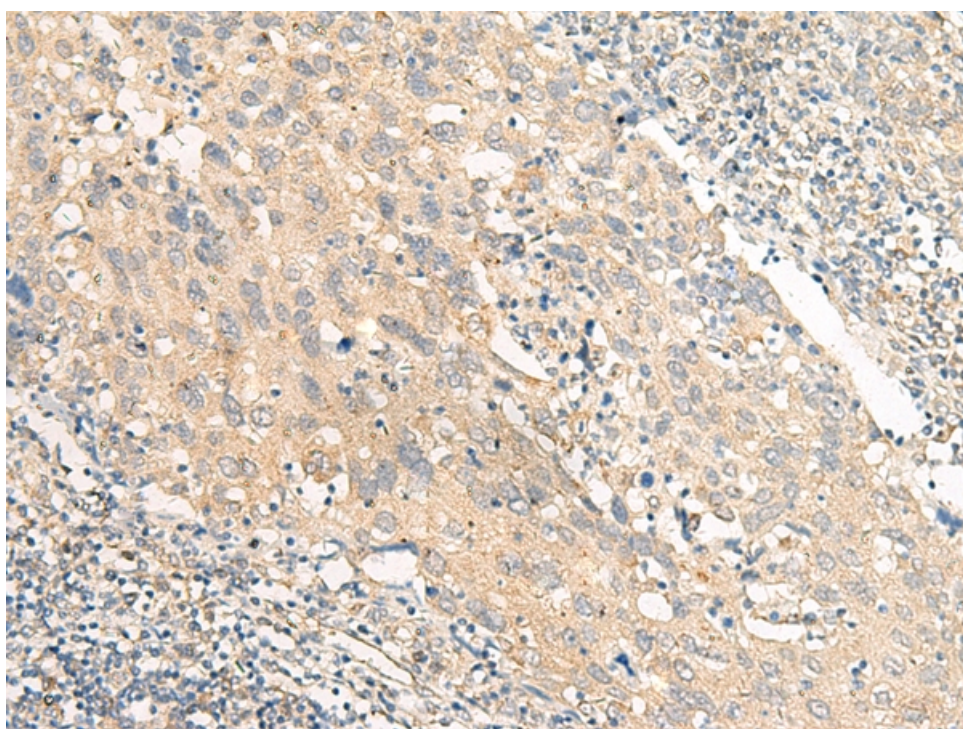
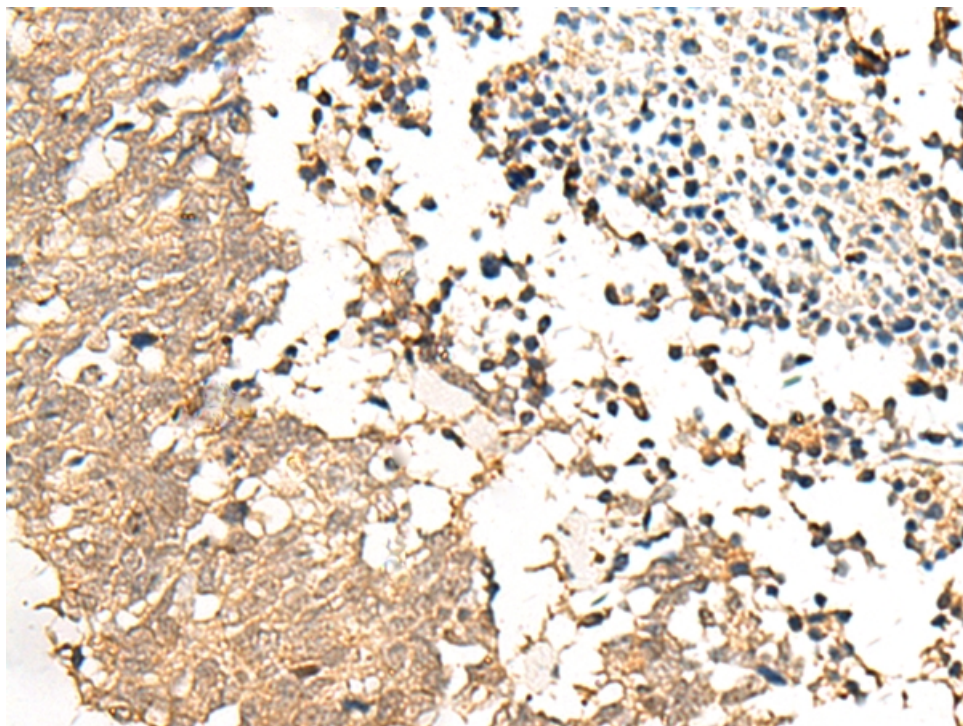
克隆类型: rabbit polyclonal

### 技术规格

<b>Background:</b>	This gene encodes a phosphoprotein that binds to the Na <sup>+</sup> /H <sup>+</sup> exchanger NHE1. This protein serves as an essential cofactor which supports the physiological activity of NHE family members and may play a role in the mitogenic regulation of NHE1. The protein shares similarity with calcineurin B and calmodulin and it is also known to be an endogenous inhibitor of calcineurin activity.
<b>Applications:</b>	ELISA, IHC
<b>Name of antibody:</b>	CHP1
<b>Immunogen:</b>	Synthetic peptide of human CHP1
<b>Full name:</b>	calcineurin like EF-hand protein 1

<b>Synonyms:</b>	CHP; p22; p24; Sid470p; SLC9A1BP
<b>SwissProt:</b>	Q99653
<b>ELISA Recommended dilution:</b>	5000-10000
<b>IHC positive control:</b>	Human cervical cancer and Human lung cancer
<b>IHC Recommend dilution:</b>	30-150





**mlbio** 梅联生物  
Good elisakit producers