

## 兔抗 COMMD1 多克隆抗体

中文名称: 兔抗 COMMD1 多克隆抗体

英文名称: Anti-COMMD1 rabbit polyclonal antibody

别名: copper metabolism domain containing 1 MURR1; C2orf5

抗原: COMMD1

储存: 冷冻 (-20℃)

宿主: Rabbit

反应种属: Human, Mouse

标记物: Unconjugate

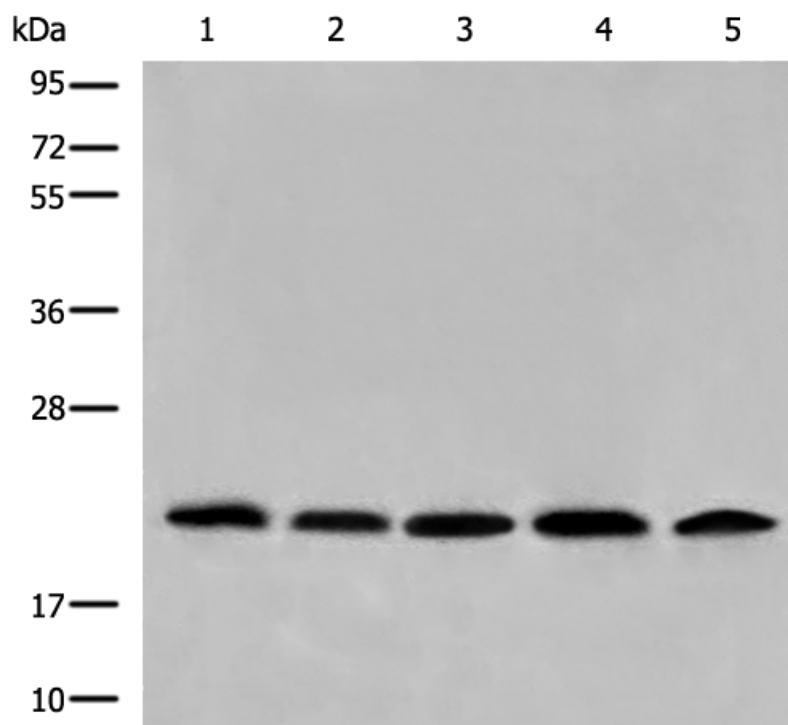
相关类别: 一抗

克隆类型: rabbit polyclonal

### 技术规格

<b>Background:</b>	Fusion protein of human COMMD1
<b>Applications:</b>	ELISA, WB, IHC
<b>Name of antibody:</b>	COMMD1
<b>Immunogen:</b>	Fusion protein of human COMMD1
<b>Full name:</b>	copper metabolism domain containing 1
<b>Synonyms:</b>	MURR1; C2orf5
<b>SwissProt:</b>	Q8N668
<b>ELISA Recommended dilution:</b>	5000-10000
<b>IHC positive control:</b>	Human gastric cancer;Human ovarian cancer
<b>IHC Recommend dilution:</b>	25-100
<b>WB Predicted band size:</b>	21 kDa
<b>WB Positive control:</b>	231,Jurkat , A549 , Hela and HepG2 cell lysates

WB Recommended dilution: 200-1000



**mlbio** 梅联生物  
Good elisakit producers

