

兔抗 CPS1 多克隆抗体

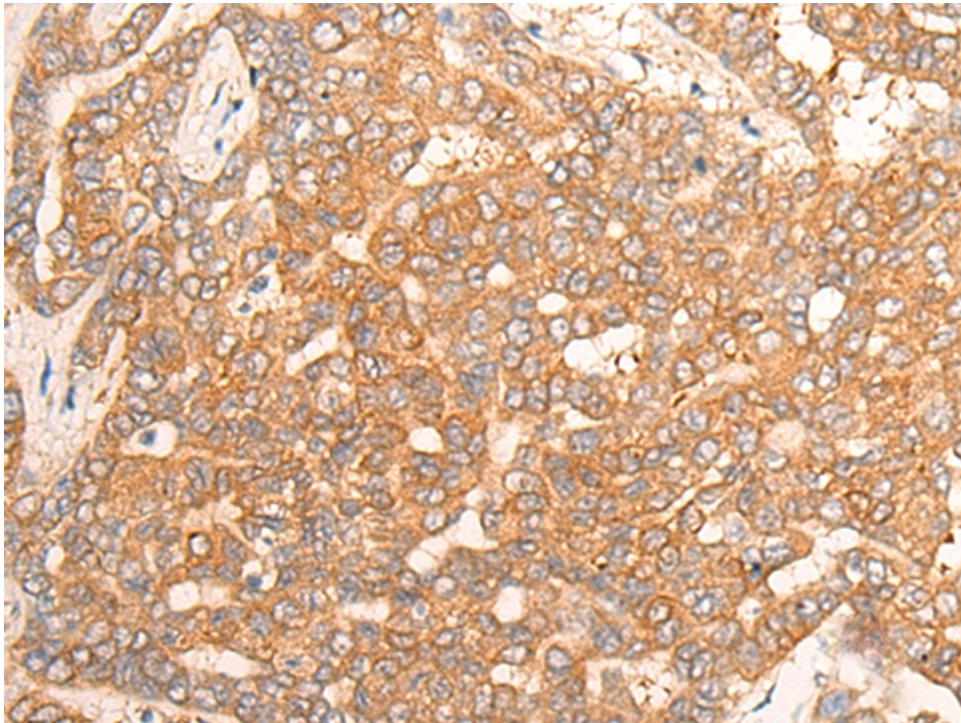
- 中文名称：兔抗 CPS1 多克隆抗体
- 英文名称：Anti-CPS1 rabbit polyclonal antibody
- 别名：carbamoyl-phosphate synthase 1 PHN; CPSASE1
- 相关类别：一抗
- 储存：冷冻（-20℃）
- 宿主：Rabbit
- 抗原：CPS1
- 反应种属：Human, Mouse, Rat
- 标记物：Unconjugate
- 克隆类型：rabbit polyclonal

技术规格

Background:

The mitochondrial enzyme encoded by this gene catalyzes synthesis of carbamoyl phosphate from ammonia and bicarbonate. This reaction is the first committed step of the urea cycle, which is important in the removal of excess urea from cells. The encoded protein may also represent a core mitochondrial nucleoid protein. Three transcript variants encoding different isoforms have been found for this gene. The shortest isoform may not be localized to the mitochondrion. Mutations in this gene have been associated with carbamoyl phosphate synthetase deficiency, susceptibility to persistent pulmonary hypertension, and susceptibility to

	o venoocclusive disease after bone marrow transplantation.
Applications:	ELISA, IHC
Name of antibody:	CPS1
Immunogen:	Synthetic peptide of human CPS1
Full name:	carbamoyl-phosphate synthase 1
Synonyms:	PHN; CPSASE1
SwissProt:	P31327
ELISA Recommended dilution:	5000-10000
IHC positive control:	Human liver cancer and Human lung cancer
IHC Recommend dilution:	30-150



mlbio 梅联生物
Good elisakit producers

